

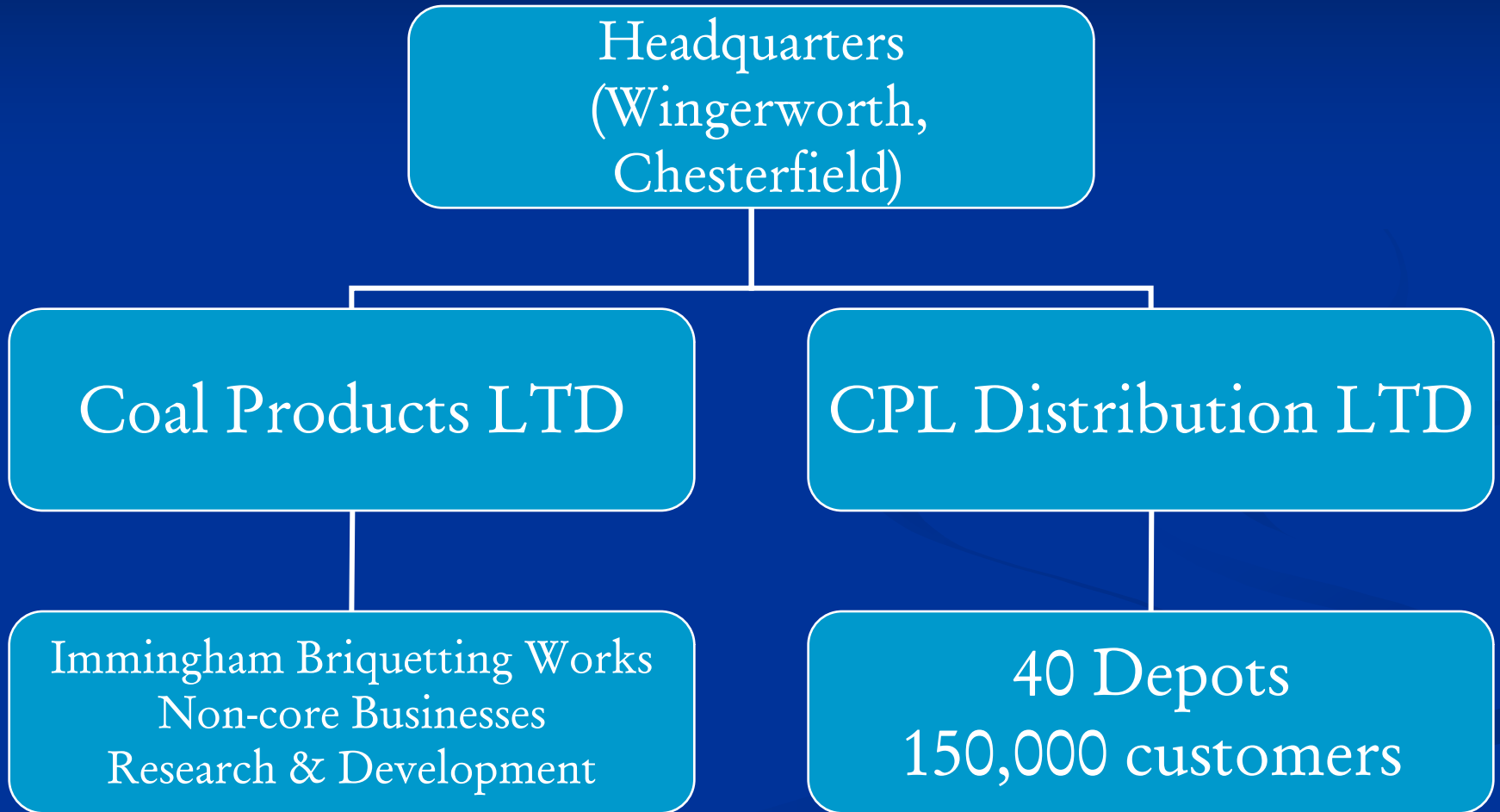
# CPL Industries LTD

## Doctoral Training Brief

# Overview

- The UK market leader in solid fuel manufacture and distribution.
- Based in Chesterfield
- Turnover £96 million
- Employs 551 personnel

# Structure



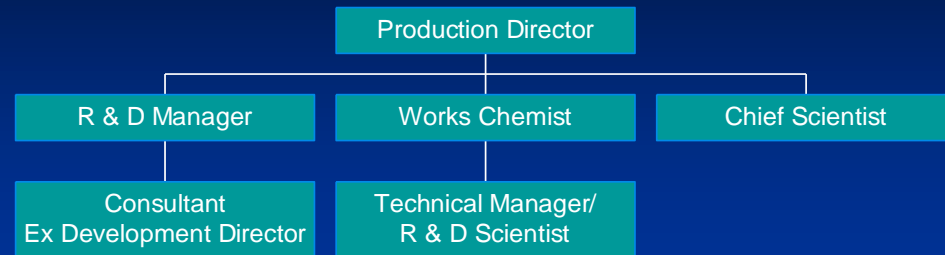
# Process

- Immingham Process – Briquetting Process
  - Blend of Feedstock components
  - Crushing & Drying
  - Binder addition – molasses
  - Mild heat treatment

# Products

- MultiFuel Stove/Open Fire
  - Ecoal
  - Homefire
  - Homefire Ovals
  - Multiheat (Brazier)
  - Supertherm
- Non – Smokeless
  - Wildfire
- Closed Appliance
  - Ancit
  - Briteheat
  - Phurnacite
  - Stoveheat
  - Taybrite

# Resources and Control



## ■ The New Structure

- Centred at Immingham - at the sharp end
- New R&D Manager - coal and waste industry experience
- R&D Scientist transferred to Immingham
- Supported by Chief Scientist and 2 experienced Consultants

## ■ Control

- Development driven by commercial team
- More focused approach - historically unco-ordinated
- Confidentiality Agreements/Patents where applicable to secure IP rights

## ■ Facilities

- Full laboratory resource - inc HETAS/Multifuel Stove fire testing building
- Pilot scale briquetting press
- Installing industrial testing equipment

# Centre for Doctoral Training

## CPL Objective

The development of manufactured solid fuels associated with reduced emissions of carbon dioxide. The products will have applications in the domestic heating and possibly the industrial markets.